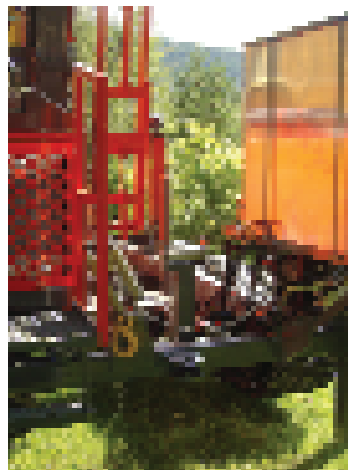
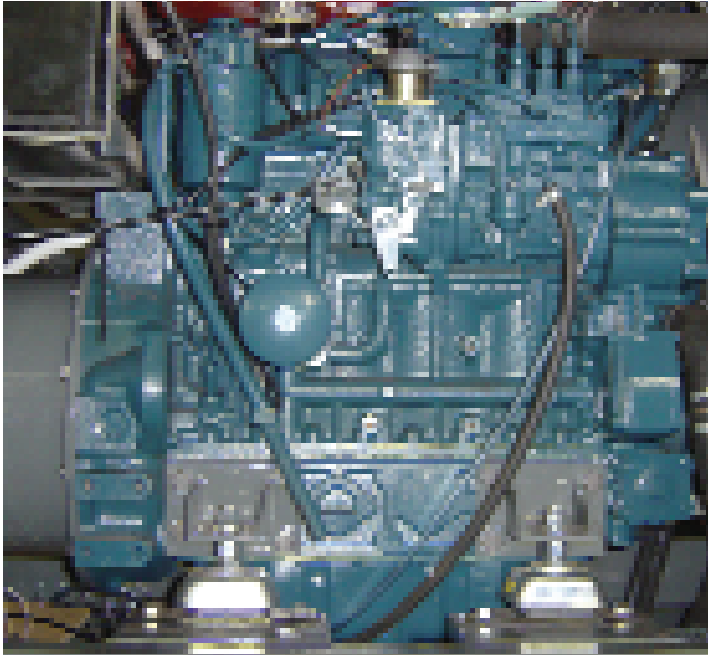
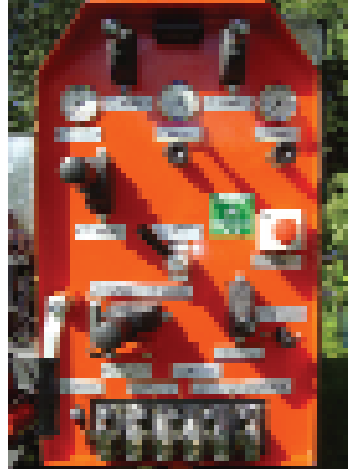


NEPRO

NESTESTOG PRODUKSJON



NP 2000 IS THE DRILLING RIG WITH THE MOST EQUIPMENT AS STANDARD



- With our solid frame you will get a stable and robust construction.
- Nestestogs triangular bracket and hydraulic feeder support allows the feeder to go all the way down onto the frame. This makes our drilling rig suitable for all kinds of horizontal drilling.
- Our rig is being delivered with a choice of steel or rubber belts.
- NP 2000 has a simple and manageable frontpanel, with only pilot and direct-acting valves, NO ELECTROVALVES.
- Hydraulic joystick in the frontpanel for operating the belts.
- Protected support legs.
- Sepson 4 tonnes main winch.
- Dynaset injection pump for water.
- Electricity and welding generator.
- 500 liter aluminium watertank.

BY CHOOSING NP2000 YOU WILL GET

- An easily manageable and compact rig with all service points accessible.
- LS-hydraulics from Sauer Danfoss ensures that the energy produced is used for drilling and not to create unnecessary overheating.
- All this combined with a fuel-efficient Kubota 96hp motor secures that the use of fuel is as low as possible.
- The NP 2000 industry leading design and top quality components are manufactured to fully comply with the ISO certification ensuring that the rig works day after day, year after year under the most demanding working conditions.

SPECIFICATIONS NP 2000

MEASUREMENTS AND WEIGHT

| | |
|--|-----------|
| Width | 2250 mm |
| Length with feeder, down | 6050 mm |
| Height with feeder, down | 2200 mm |
| Center height with feeder i transport position | 1100 mm |
| Weight | 6700 kg |
| Diesel tank | 92 liter |
| Drilling oil tank | 43 liter |
| Hydraulic oil tank | 165 liter |

UNDERCARRIAGE

Caterpillar 307c with steel or rubber belts

| | |
|-----------------|-------------------------|
| Belt width | 450 mm |
| Belt lenght cc | 2002 mm |
| Ground pressure | 0,41 kg/cm ² |

POWER PACKAGE

| | |
|---|--------------|
| Kubota V 3800DI-T | |
| Engine power | 71 kW |
| Max rpm | 2600 rpm |
| Pump Sauer Danfoss, JRR 060B variable | 48-156 l/min |
| Battery | 2 x 105 Ah |
| El monitoring, 2 emergency stops and error indicators | |

FEEDER

| | |
|-----------------------|-----------|
| Feeder lenght | 4000 mm |
| Feeder force, maximum | 4300 kg |
| Pull up, maximum | 6500 kg |
| Fast feeder | 1,00m/sec |
| Fast pull up | 0,63m/sec |
| Drilling steering | 220 mm |
| Top winch | 250 kg |

ROTASION UNIT

| | |
|----------------|--------------|
| Torque | 2300/4600 Nm |
| Rotasion speed | 0-90 rpm |
| Spindel thread | API 2 3/8" |

MISCELLANEOUS

| | |
|--------------------|-----------|
| Pipe rack capacity | 64 pc Ø76 |
| | 49 pc Ø89 |

All specifications are for guide purposes only. Contact Nepro for further information.

Nestestog Production AS is a small business located in Vinje, Norway. The company was started by the previous director and senior technician from Nemek in 1993. The company produces drilling rigs.

The NP 2000's high standards are well recognised within the Scandinavian drilling rig industry and you will find many similar features on some of the rigs of our competitors. This itself is proof that the construction and solutions are successful.

For further information please contact.

Nestestog Produksjon AS
3890 Vinje
Norway

Telephone +47 35 07 22 05
Ånund Nestestog mobile +47 95 93 88 60
Knut Olav Edland mobile +47 95 29 20 85
Fax +47 35 07 22 25
e-mail nepro@online.no
www.nepro.no